



iiná bá, Inc.

ENVIRONMENTAL | ENGINEERING | SURVEYING | CONSTRUCTION | TRANSPORTATION

INVITATION TO BID (ITB)

NAVAJO NATION DIVISION OF COMMUNITY DEVELOPMENT (NNDCD)

CONSTRUCTION OF A HELIPAD

April 8, 2024

The NNDCD is soliciting bids under this ITB to accomplish the purchase/construction of an emergency helipad for the Sanostee Chapter (San Juan County, New Mexico) on the Navajo Indian Reservation as part of the American Rescue Plan Act (ARPA) funding from the federal government. The general specifications for construction under this ITB are as follows:

- The required helicopter parking pad will be located in a position to provide a minimum distance between the tail rotor arc and any object, building, safety area, or other parking areas (see *attached*).
- The dimension of the helipad will be no less than 50 feet by 50 feet (2,500 square feet).
- The ground at the site of the helipad will be prepared in accordance with standard practices for the proper forming and preparation of a concrete slab of said dimensions.
- The helipad will be constructed of reinforced concrete with a nominal thickness of six (6) inches.
- The helipad will be constructed with a Safety Zone of no less than 82 feet by 82 feet.
- The helipad will contain standard markings for a square helipad in accordance with **Figure 4-1** attached.
- The dimensions for the standard markings are shown in **Figure 4-2** attached.
- The helipad will be fitted with additional markings and perimeter lighting as shown in **Figures 4-5, A-1, A-109, and E-3** attached. The bidder will be responsible for determining the closest location for accessing the necessary power requirements.
- The helipad will be fitted with a standard wind cone outside the limits of the helipad within the Safety Zone.
- Around the perimeter of the Safety Zone, a BLM-style four-strand fence will be installed with a gated opening of no less than 10 feet, to prevent unauthorized access and livestock from entering the area. Each side of the subject fencing will be fitted with a warning sign in accordance with **Figure 7-1** attached or comparable.

The following are additional requirements to be included or stated in the bid and priced, as applicable, with the aforementioned above:

- Standard one-year post construction workmanship warranty with terms and conditions.
- Standard manufacturer warranty on any parts with terms and conditions.
- Anticipated construction completion schedule in calendar days from date of Notice to Proceed (NTP).
- Length of time bid price is valid or will be honored.

The following are the terms and conditions in force with respect to this ITB:

- Bid preference is given to registered Navajo Priority One vendors and secondly to Navajo Priority Two vendors.
- Vendors claiming Priority status **MUST** clearly label on the outside of their bid package the particular status being requested.
- If no vendors claim a priority status, bids from all other qualified vendors are welcomed.
- Revisions to bids can be made up until the time the bids are to be opened and evaluated. No bids will be changed after the bid opening date.
- The bid must be clearly identified and itemized by equipment requested with fully-burdened price clearly

Maintaining Harmony Between Man and His Environment

iiná bá, Inc. 1812 Schofield Lane, Farmington, NM 87401 PO Box 2606 Farmington, NM 87499

Phone: (505) 327-1072 Fax: (505) 327-1517

www.iinaba.com



iiná bá, Inc.

ENVIRONMENTAL | ENGINEERING | SURVEYING | CONSTRUCTION | TRANSPORTATION

marked. Navajo Nation Business Activity Tax (NNBAT) of 6% must be included in the bid price as a separate line item.

- Successful bidder must be able to provide a completed W-9 and a Navajo Nation Certification Regarding Debarment, Suspension, and Contracting Eligibility.

Please submit all bids postmarked by April 12, 2024 by 05:00 pm MST to (no e-mailed or faxed bids allowed):

iiná bá, Inc.
1812 Schofield Lane
Farmington, NM 87401
or
P. O. Box 2606
Farmington, NM 87499

Any questions can be directed to Mr. John R. Isham, CPG at (505) 327-1072 or via email at jisham@iinaba.com

Please respond accordingly:

- I plan on submitting a bid for the subject ITB.
- I do not plan on submitting a bid for the subject ITB.

ITB posted between April 8, 2024 and April 12, 2024 on IBI website (www.iinaba.com)

Maintaining Harmony Between Man and His Environment

iiná bá, Inc. 1812 Schofield Lane, Farmington, NM 87401 PO Box 2606 Farmington, NM 87499

Phone: (505) 327-1072 Fax: (505) 327-1517

www.iinaba.com

PROPOSED SANOSTEE HELIPAD LOCATON

Legend

- Area
- Feature 1
- Navajo Nation Tribal Government
- SANT_Proposed_Survey_Area

Sanostee Helipad Proposed Location

Indian Service Rte 5010

Indian Service Rte 5010

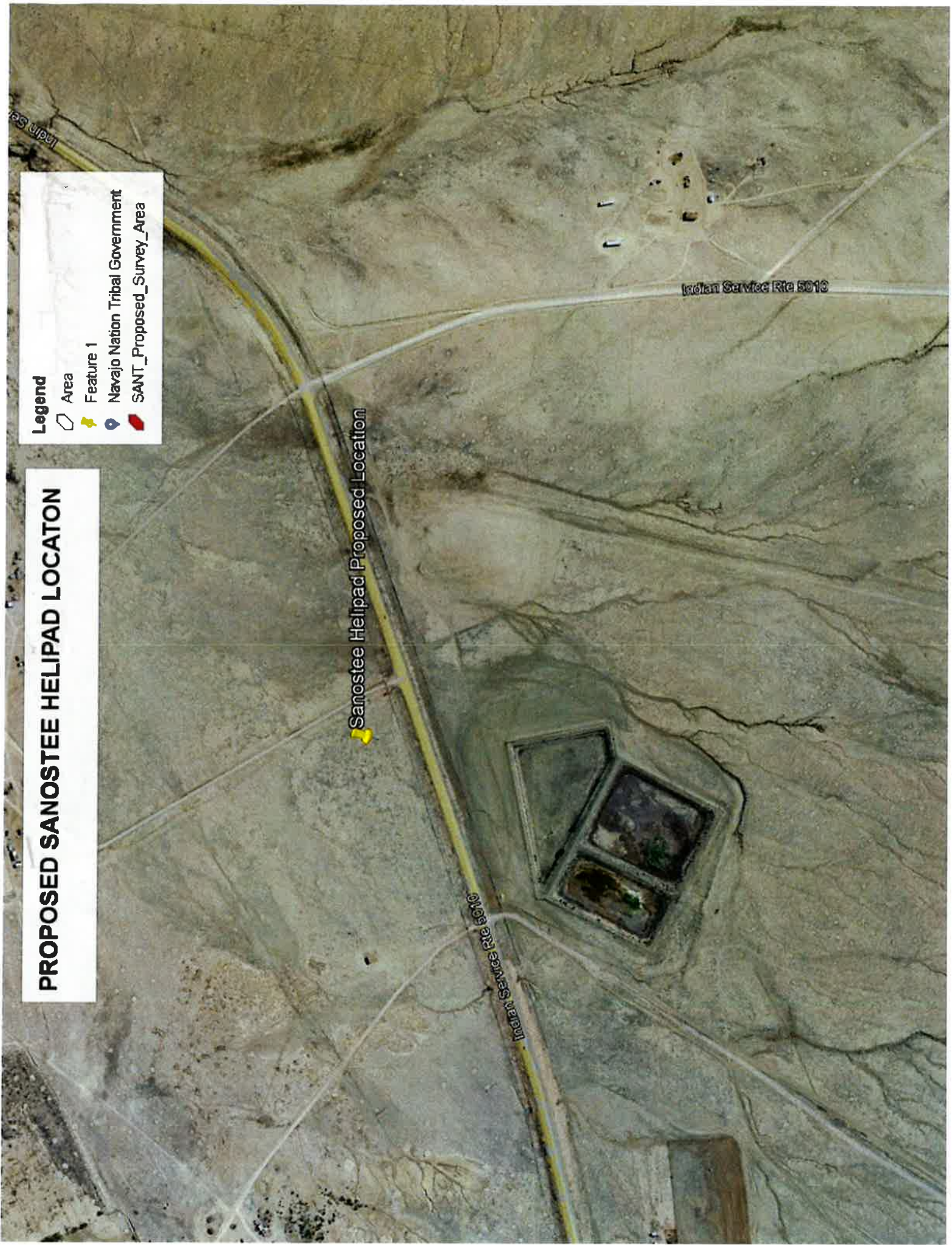
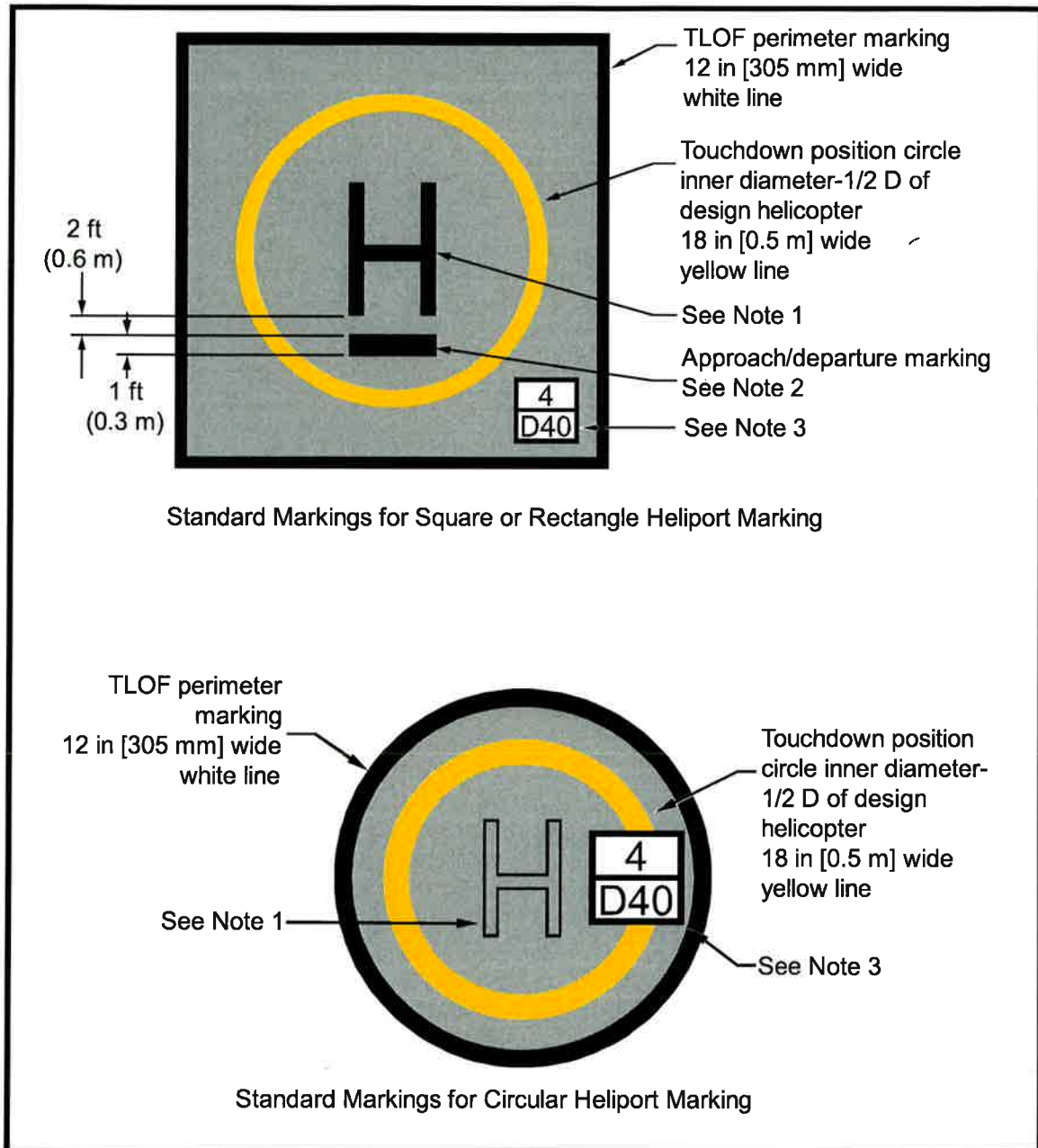


Figure 4-1. Standard TLOF Markings



Standard Markings for Square or Rectangle Heliport Marking

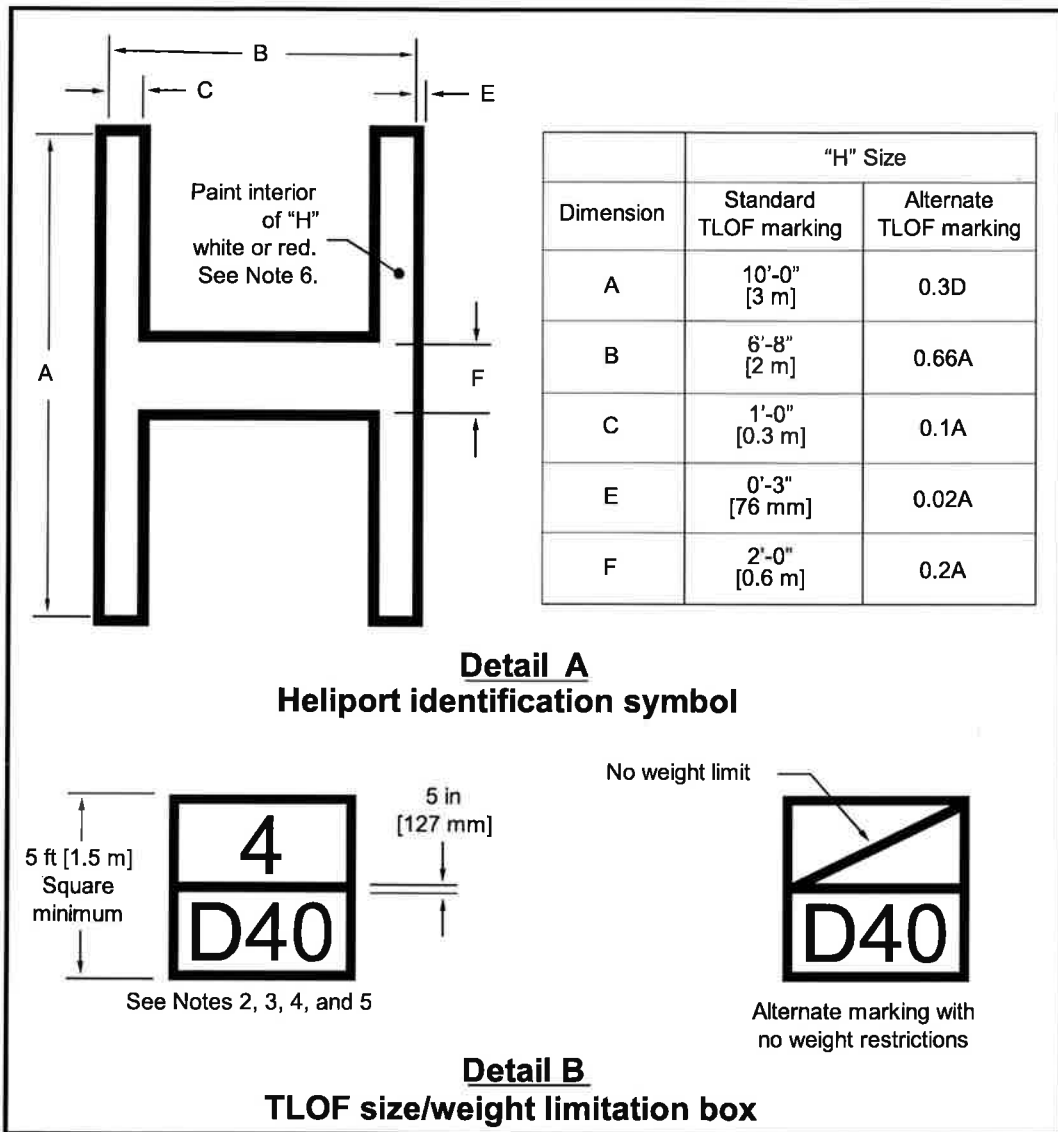
Standard Markings for Circular Heliport Marking

Note 1: For GENERAL AVIATION and TRANSPORT heliports, mark the TLOF with a white “H” marking (see Figure 4-3). For HOSPITAL heliports, see Figure 4-2, Detail A, for dimensions.

Note 2: Place a 1-foot black bar 2 feet (0.6 m) below the “H” marking when it is necessary to distinguish the preferred approach/departure direction.

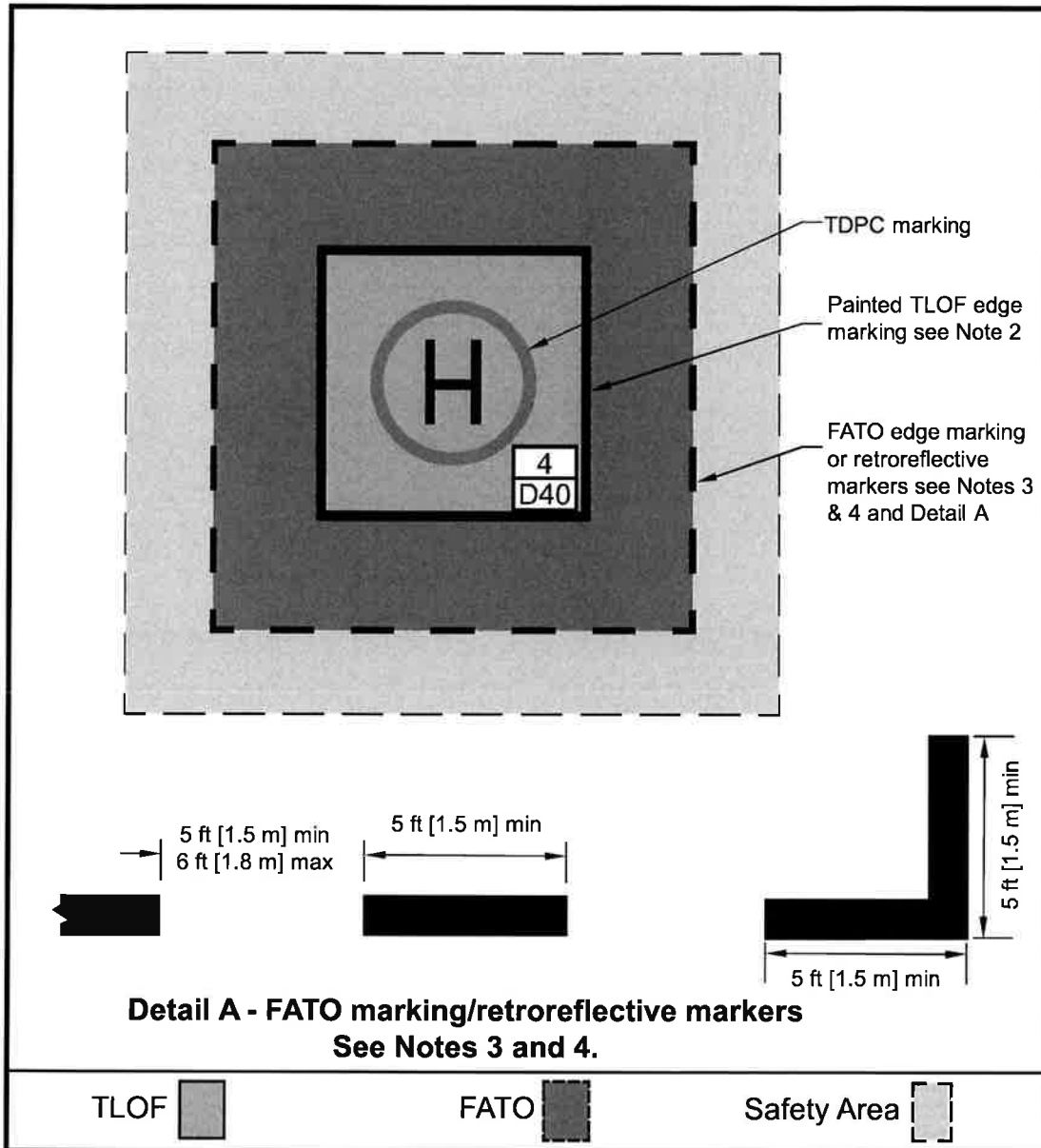
Note 3: See Figure 4-2, Detail B, for dimensions.

Figure 4-2. Standard Heliport Identification Symbol, TLOF Size and Weight Limitations



- Note 1:** See [Appendix D](#) for the form and proportion of the numbers used in the TLOF Size and Weight Limitation Box.
- Note 2:** Make the minimum size of the box 5 ft (1.5 m) square. Where possible, increase this dimension to a 10 ft (3 m) square for improved visibility.
- Note 3:** Characters within the TLOF Size and Weight Limitation Box are black on a white background.
- Note 4:** "4" indicates the maximum takeoff weight (4,000 lbs (1,814 kg)) of the TLOF design helicopter, in units of thousands of pounds.
- Note 5:** "D40" indicates the controlling dimension D of the largest helicopter (40 ft (12.2 m)) for which the TLOF is designed.
- Note 6:** See paragraph 4.4.3 for application of size/weight limitation box.
- Note 7:** For GENERAL AVIATION and TRANSPORT heliports, mark the TLOF with a white "H" marking. For HOSPITAL heliports, mark the TLOF with a red "H" in a white cross.

**Figure 4-5. Paved TLOF/Paved FATO –
Paved TLOF/Unpaved FATO – Marking: TRANSPORT Heliports and Other
Heliports with a Paved TLOF**



Note 1: Mark the perimeter of the TLOF and FATO.

Note 2: Define the perimeter of a paved or hard surfaced TLOF with a continuous 12 inch (0.3 m) white line.

Note 3: Define paved load-bearing FATO perimeters with a 12 inch (0.3 cm) wide dashed line per Detail A.

Note 4: Define unpaved load-bearing FATO perimeters with in-pavement retroreflective markers per Detail A.

Note 5: See [Figure 4-2](#) for “H”, touchdown/position, controlling dimension D, and weight box dimensions.

APPENDIX A FIGURES.

Figure A-1. Legend and General Notes for Figures A-1 through A-23

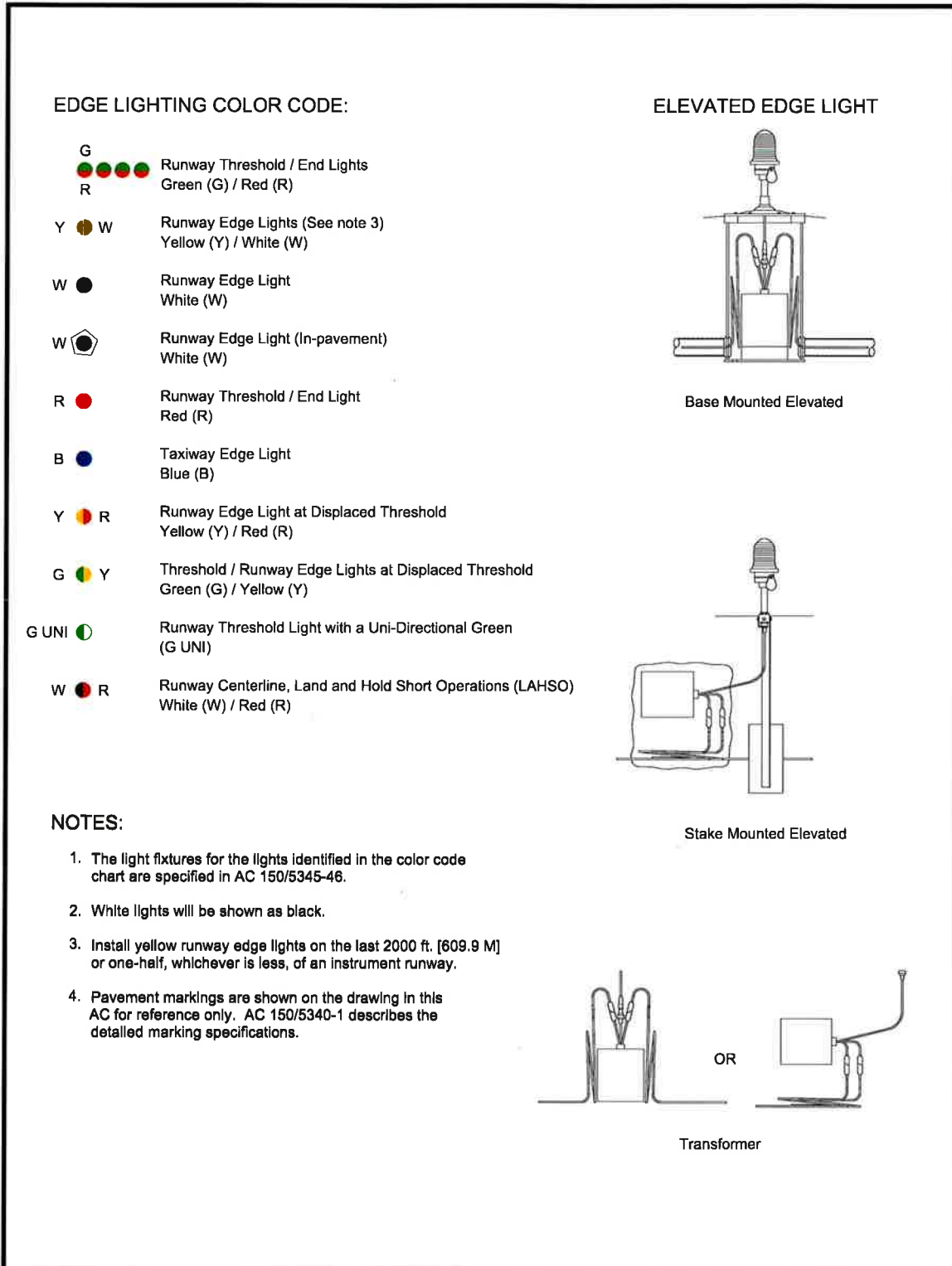


Figure A-109. Adjustment of Edge Light Elevation for High Snowfall Areas

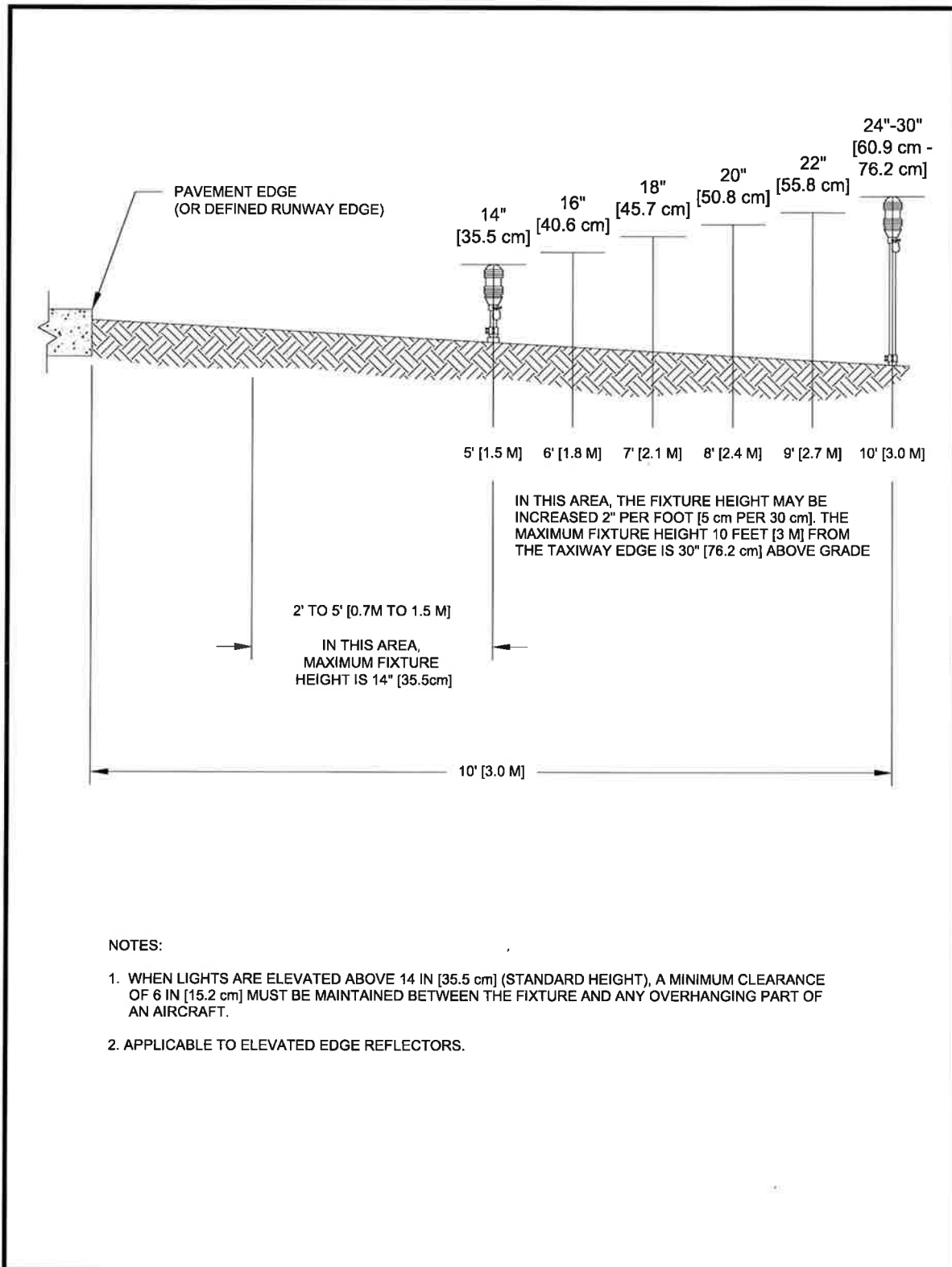


Figure E-3. Typical Standard Details for Runway and Taxiway Edge Lights –Medium Intensity Light – Stake-mounted

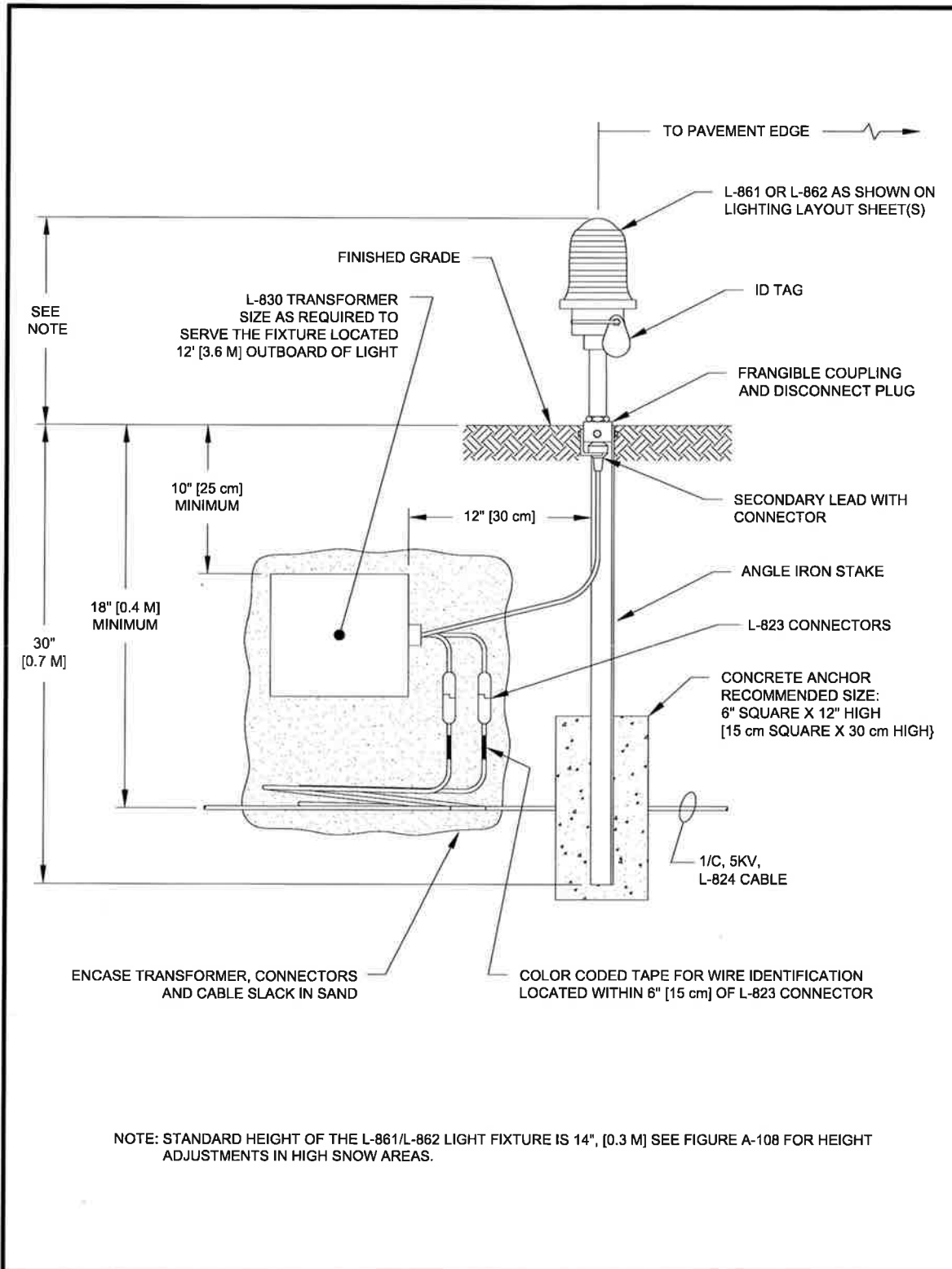
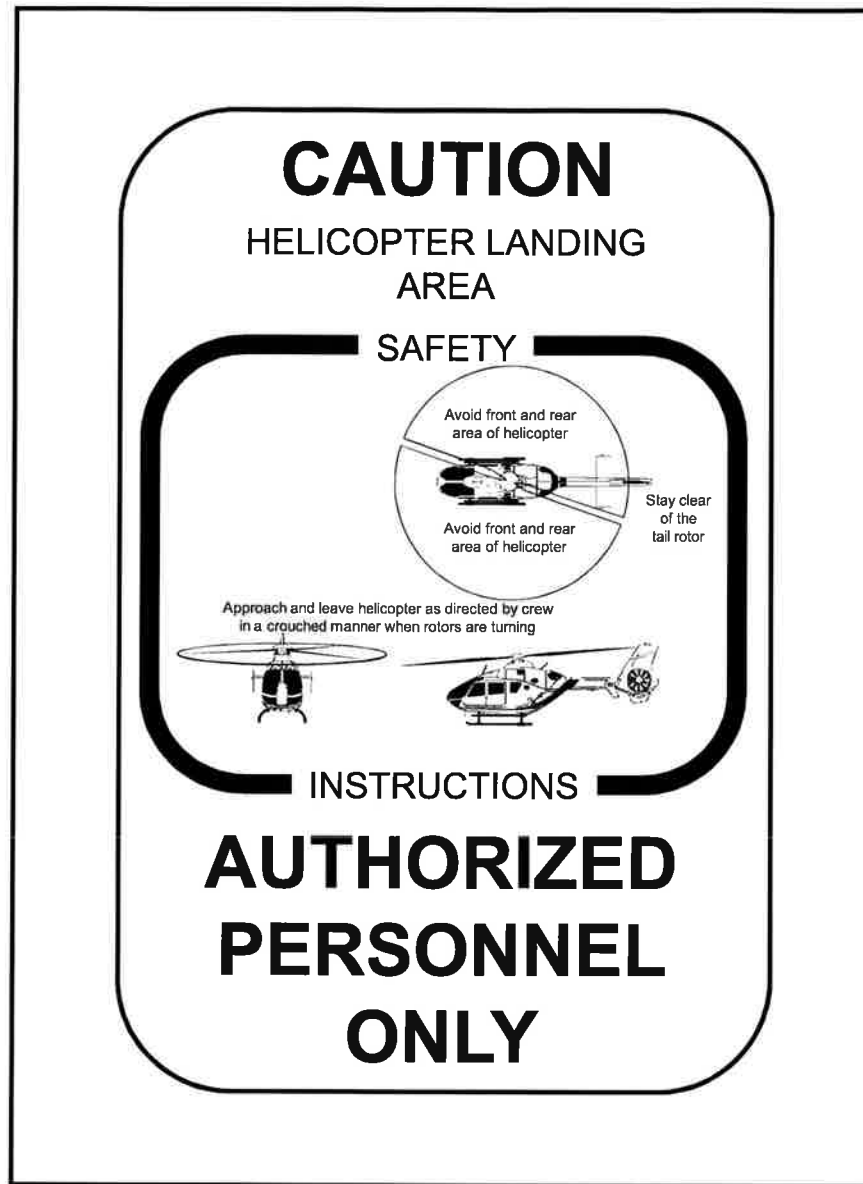


Figure 7-3. Heliport Caution Sign

7.3.2 Rescue and Fire Fighting Services.

Heliports are subject to state and local rescue and fire fighting regulations. Provide a fire hose cabinet or extinguisher at each access gate/door and each fueling location. Locate fire hose cabinets, fire extinguishers, and other fire fighting equipment adjacent to, but below the level of, the TLOF (and below the level of the FATO for elevated FATOs at TRANSPORT heliports). See additional guidance in NFPA publications listed in [Appendix E](#).

7.3.3 Communications.

Use a Common Traffic Advisory Frequency (CTAF) radio to provide arriving helicopters with heliport and traffic advisory information but do not use this radio to